

How to Upgrade Firmware for First Alert SmartBridge Full D1 DVR's

1. Download Software from the BRK website (www.brkelectronics.com). Go to PRODUCTS >> SECURITY CAMERAS and choose your SKU. Go to the "DOWNLOAD" tab and download all of the firmware files. There may be more than one. If so, they will be marked File 1 of 2 and File 2 of 2.

BRK[®]
THE PROFESSIONAL STANDARD

Home | Contact Us | SEARCH: Product, SKU, Keyword **GO**

View catalog | Products | FAQs/Troubleshooting | Register your products

BRK Professionals

- » New Construction
 - » Products
 - » Downloads
 - » Cross Reference List
 - » Codes
 - » Legislation Map
 - » Listing cards
- » MRO Professionals
- » OEMs

Other Links:

- » Company Profile
- » Rep locator
- » Customer Service Numbers
- » News / Press
- » Become a Distributor

» Security Cameras » Wired Cameras: DCAD8810-700

DCAD8810-700
8 Channel/ 8 Camera Full D1 DVR Kit

8 Channel, 8 Camera Full D1 H.264 DVR System with SmartBridge 5 Minute Setup Remote Access. Includes HDMI output and 1TB HDD, eight 700TVL cameras with night vision, Auto IR cut filter and cable-safe bracket. Web ready and mobile phone compatible.

SKU# DCAD8810-700
Complete kit perfect for high end residential, light commercial/retail and small business/warehouse.

First Alert
SmartBridge[™]
REMOTE ACCESS
FULL D1 VIDEO SECURITY SYSTEM

MODELS

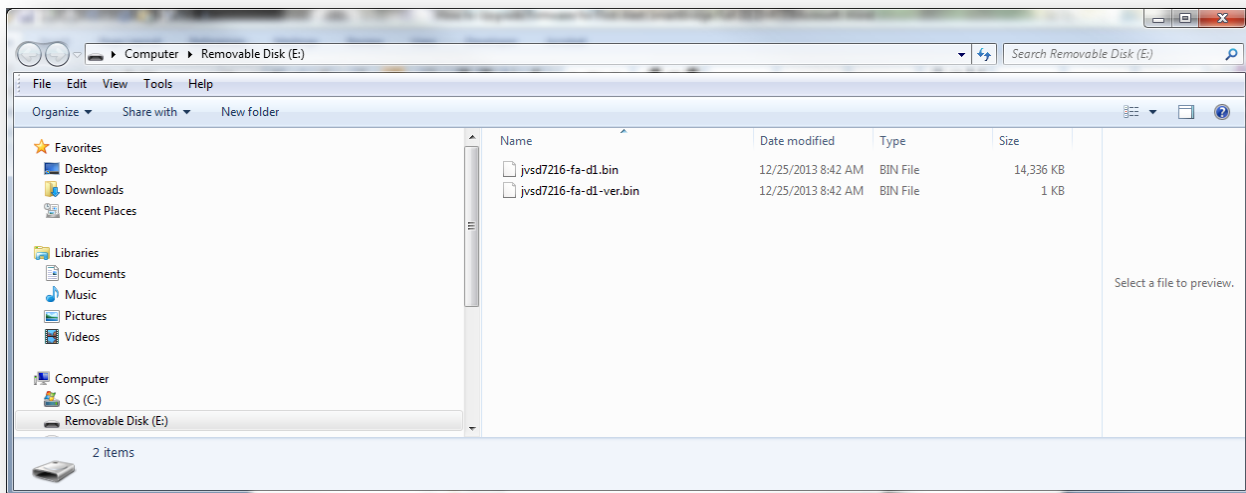
- DCAD8810-70019 8 Channel/8 Cameras/16.5" Monitor
- DCAD8810-700 8 Channel/8 Cameras
- DCAD8810-700 8 Channel/8 Cameras
- DVRAD-0816 8 Channel 1TB HDD DVR
- DVRAD-1620 16 Channel 2TB HDD DVR

H.264 **REC** **1080P** **1080P** **1080P** **1080P** **1080P** **1080P** **1080P** **1080P**

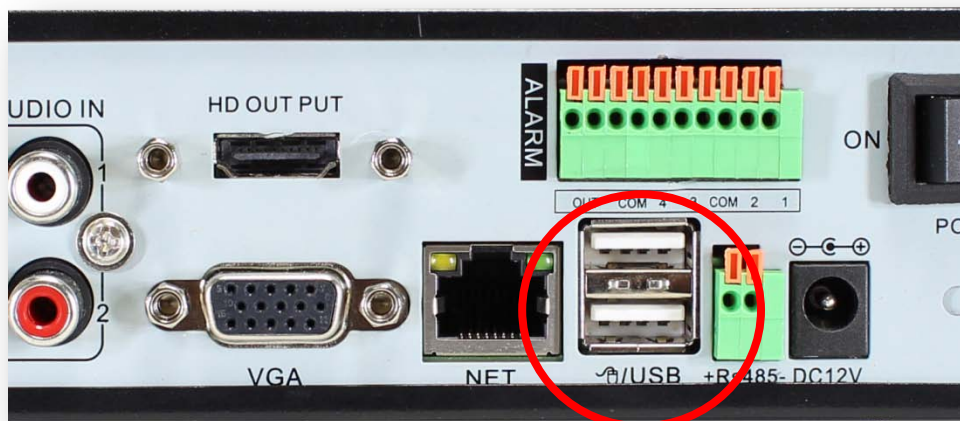
Feature **Spec** **Download** **kg.**

- » User Manuals - English Version (Original as in Box)
- » Specification Sheets
- » High Res Image
- » DVR Back Panel
- » DVR Front Panel
- » User Quick Install Guide
- » FIRMWARE: 2/1/2014: Upgrade to Full Schedule Record

2. Copy all of the firmware upgrade .BIN file(s) to the root directory of an empty USB Disk. Files must be in the root directory to be recognized by the DVR.

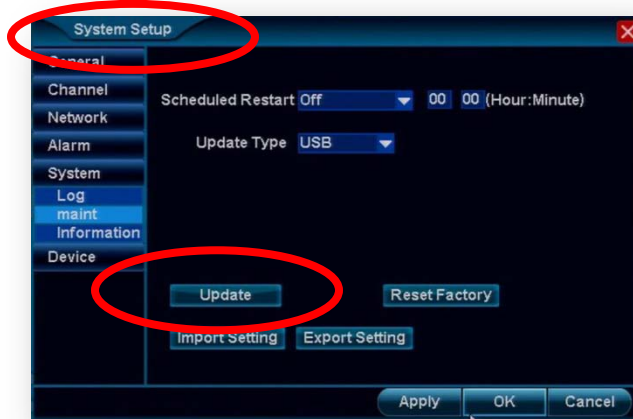


3. Insert the USB disk into one of the USB 2.0 data ports on the back of the DVR.

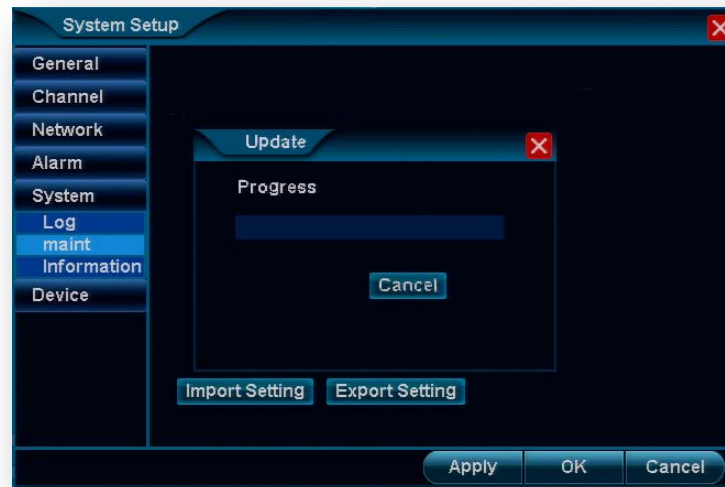


4. Update DVR: Go to the SYSTEM SETUP Menu: SYSTEM SETUP >> SYSTEM >> MAINT and select the "UPDATE" button.

Note: you may want to write down the firmware number to verify it changed with the update.
To do this, go to the SYSTEM >> INFORMATION tab.



5. DVR system will indicate "Update; Progress"



6. When complete, the system will automatically reboot
7. Your new update should be in effect. Please check that the firmware number has changed.